

MS-50

MOTORIZED TOP DOWN ROLLER SHADE WITH MOTOR SYSTEM

FEATURES:

- Contemporary and compact roller shade system
- Fabric wrapped fascia available
- Available as coupled shade

BENEFITS:

- Compact and strong
- Smooth operation
- Simple installation
- Can be converted to motorized with AC, DC or Battery Motors

SYSTEM INDEX

1. MOTOR

2. TUBE

- A. 45mm Tube
- B. 49mm Tube

3. MOTOR BRACKET

Available in White and Black

4. IDLE BRACKET

Available in White, Gray and Black

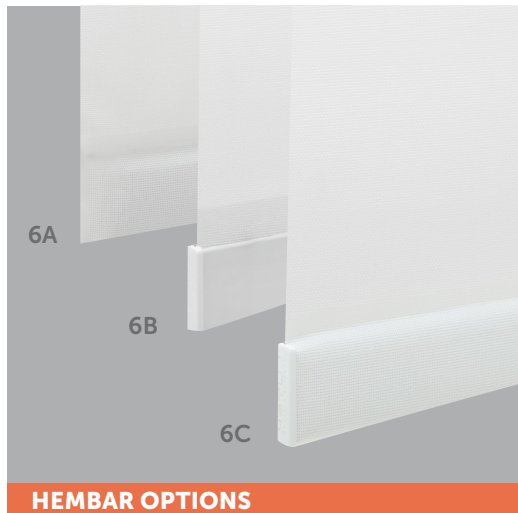
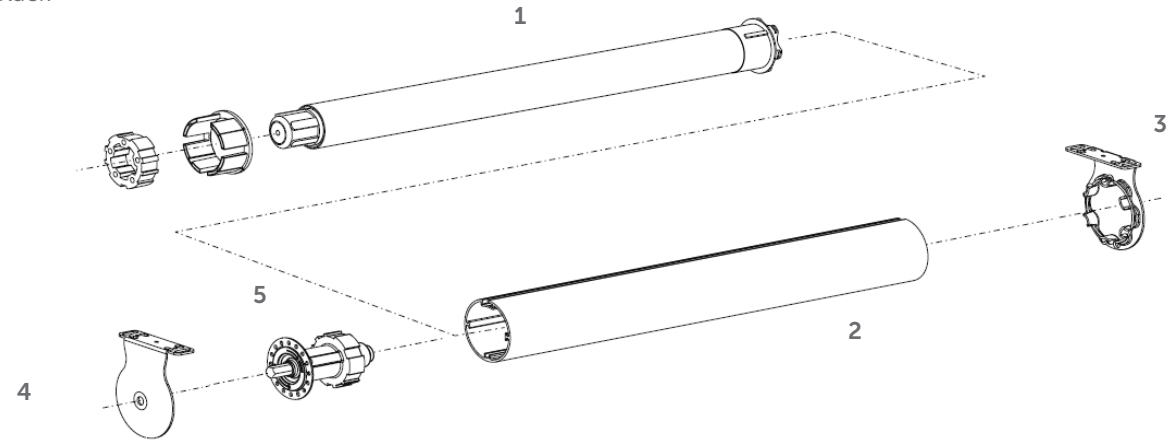
5. IDLER

Available in White, Gray and Black

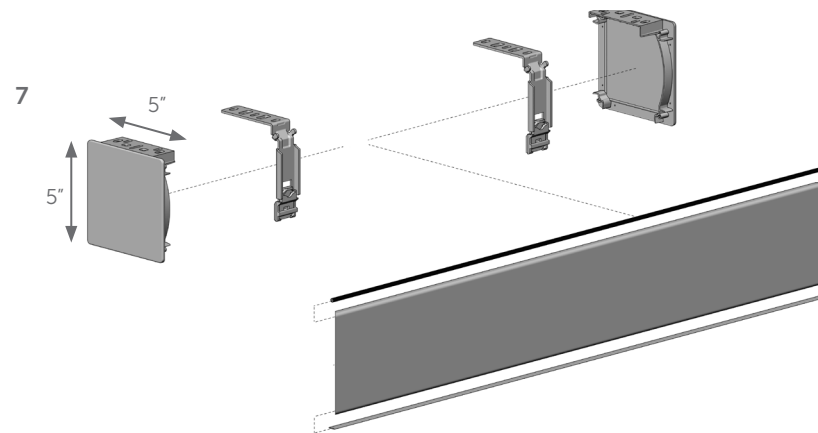
6. HEMBAR

- A. Sealed Hembar
- B. Exposed w/End Caps
- C. Fabric Wrapped w/End Caps

7. OPTIONAL FASCIA SYSTEM



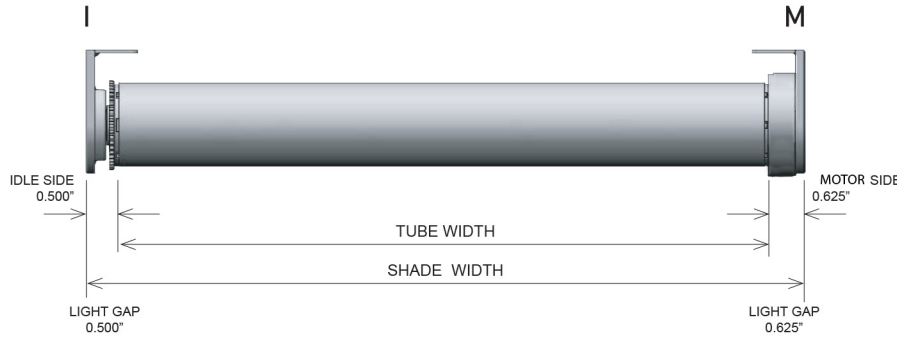
HEMBAR OPTIONS



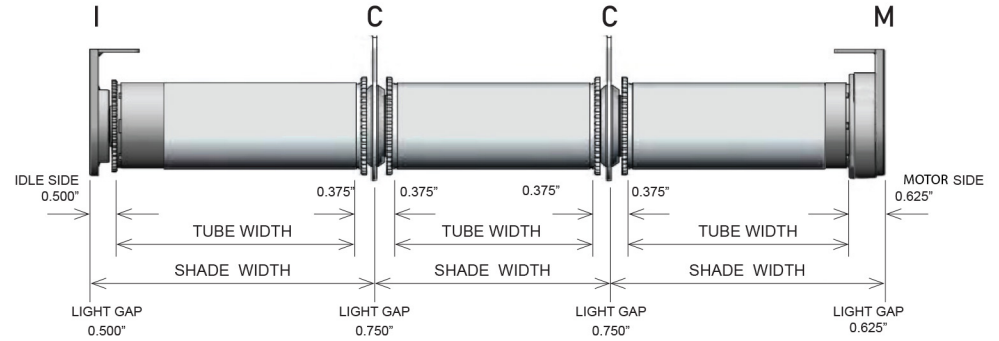
MS-50

MOTORIZED TOP DOWN ROLLER SHADE WITH MOTOR SYSTEM

SHADE DEDUCTIONS

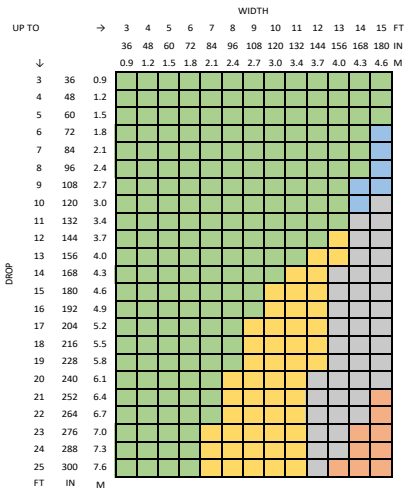


COUPLED SHADE DEDUCTIONS



DRIVE	BRACKETS	IDLE SIDE	COUPLER SIDE	CLUTCH SIDE	OVERALL DEDUCTION
M-I	WITH FASCIA END CAPS	0.625" (15.9mm)		0.750" (19.1mm)	1.375" (34.9mm)
	WITHOUT FASCIA END CAPS	0.500" (12.7mm)		0.625" (15.9mm)	1.125" (28.6mm)
I-C	WITH FASCIA END CAPS	0.625" (15.9mm)	0.375" (9.5mm)		1.00" (25.4mm)
	WITHOUT FASCIA END CAPS	0.500" (12.7mm)	0.375" (9.5mm)		0.875" (22.2mm)
C-C	WITH FASCIA END CAPS		0.750" (19.1mm)		0.750" (19.1mm)
	WITHOUT FASCIA END CAPS		0.750" (19.1mm)		0.750" (19.1mm)
M-C	WITH FASCIA END CAPS		0.375" (9.5mm)	0.750" (19.1mm)	1.125" (28.6mm)
	WITHOUT FASCIA END CAPS		0.375" (9.5mm)	0.625" (15.9mm)	1.00" (25.4mm)

MS-50 SYSTEM CAPACITY



Parameters
 Fabric Weight (oz/sq yd): 13.30
 Fabric Thickness (in): 0.02
 Hembar Weight (oz/ft): 2.75

CONTROL	BRACKET	TUBE
3 Nm Motor	Star Head Bracket	60mm
3 Nm Motor	Star Head Bracket	60mm RB56 Coupler
6 Nm Motor	Star Head Bracket	60mm
6 Nm Motor	Star Head Bracket	60mm RB56 Coupler
10 Nm Motor	Star Head Bracket	60mm RB56 Coupler
15 Nm Motor	Star Head Bracket	60mm RB56 Coupler

Outside Specifications
 *For optimal performance shades need to maintain 4:1 ratio of length to width. Shades can be outside this ratio however shade performance could be impacted
 **Exceeding these values may cause fabric tracking issues
 ***Coupled shades available for larger widths

MAX ROLL

