

MS-30

MOTORIZED TOP DOWN ROLLER SHADE WITH MOTOR SYSTEM

FEATURES:

- Contemporary and compact roller shade system
- Fabric wrapped fascia available
- Extendable idle
- Available as coupled shade

BENEFITS:

- Compact and strong
- Smooth operation
- Simple installation
- Available with DC or Battery Motors
- Extendable idle
- Short bracket
- Small light gaps

SYSTEM INDEX

1. MOTOR

2. TUBE

- A. 45mm Tube
- B. 49mm Tube

3. MOTOR BRACKET

Available in White, Gray and Black

4. IDLE BRACKET

Available in White, Gray and Black

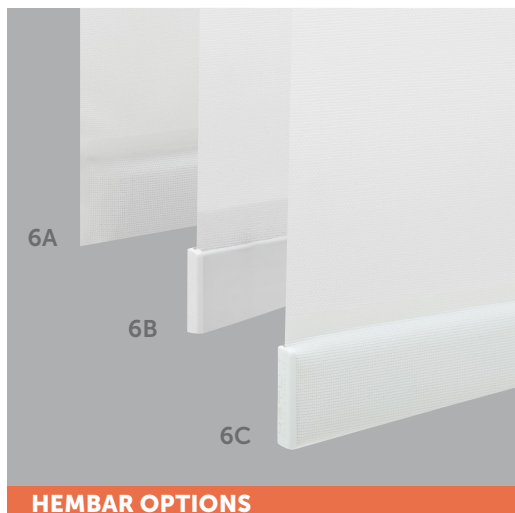
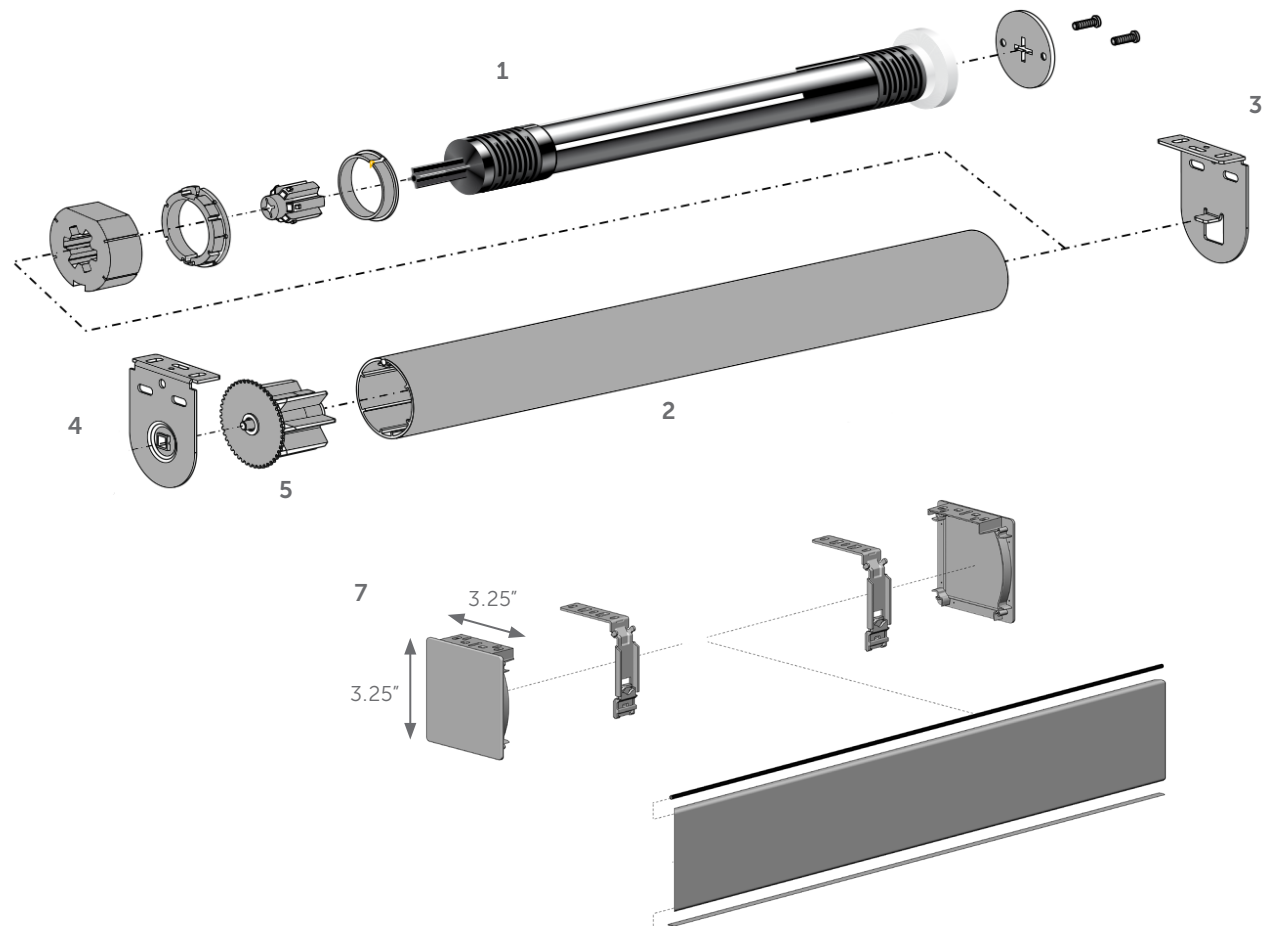
5. IDLER

Available in White, Gray and Black

6. HEMBAR

- A. Sealed Hembar
- B. Exposed w/End Caps
- C. Fabric Wrapped w/End Caps

7. OPTIONAL FASCIA SYSTEM

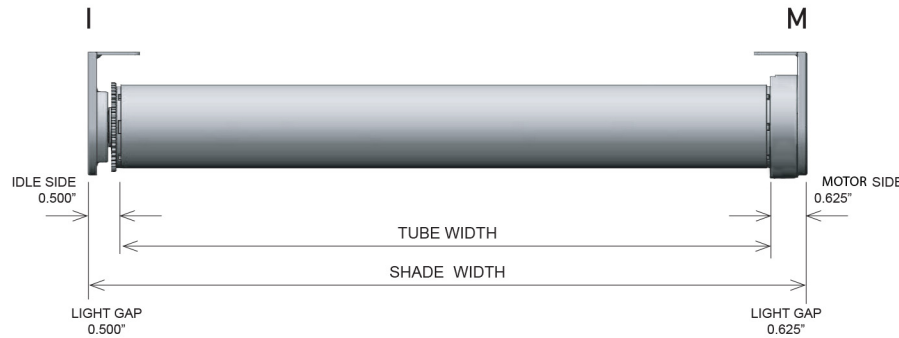


HEMBAR OPTIONS

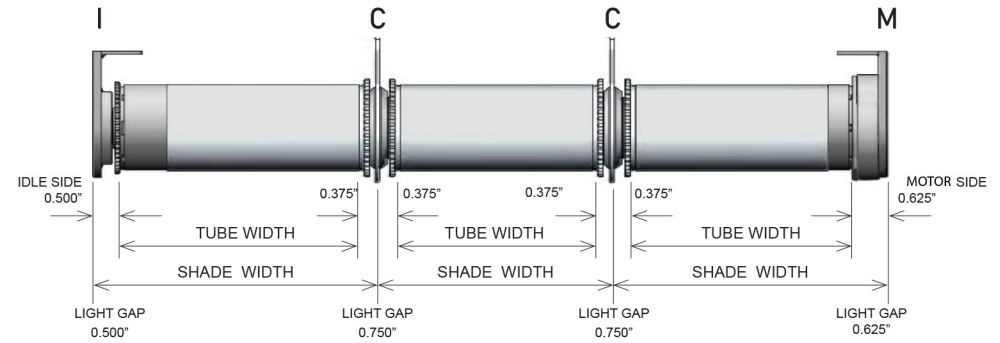
MS-30

MOTORIZED TOP DOWN ROLLER SHADE WITH MOTOR SYSTEM

SHADE DEDUCTIONS

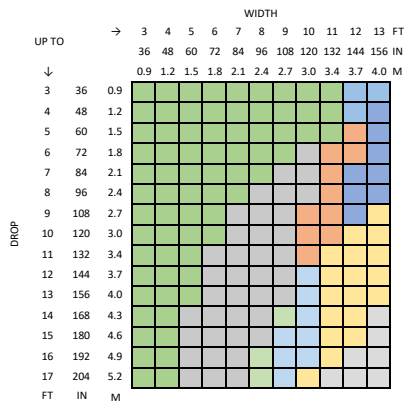


COUPLED SHADE DEDUCTIONS



DRIVE	BRACKETS	IDLE SIDE	COUPLER SIDE	CLUTCH SIDE	OVERALL DEDUCTION
M-I	WITH FASCIA END CAPS	0.625" (15.9mm)		0.750" (19.1mm)	1.375" (34.9mm)
	WITHOUT FASCIA END CAPS	0.500" (12.7mm)		0.625" (15.9mm)	1.125" (28.6mm)
I-C	WITH FASCIA END CAPS	0.625" (15.9mm)	0.375" (9.5mm)		1.00" (25.4mm)
	WITHOUT FASCIA END CAPS	0.500" (12.7mm)	0.375" (9.5mm)		0.875" (22.2mm)
C-C	WITH FASCIA END CAPS		0.750" (19.1mm)		0.750" (19.1mm)
	WITHOUT FASCIA END CAPS		0.750" (19.1mm)		0.750" (19.1mm)
M-C	WITH FASCIA END CAPS		0.375" (9.5mm)	0.750" (19.1mm)	1.125" (28.6mm)
	WITHOUT FASCIA END CAPS		0.375" (9.5mm)	0.625" (15.9mm)	1.00" (25.4mm)

MS-30 SYSTEM CAPACITY

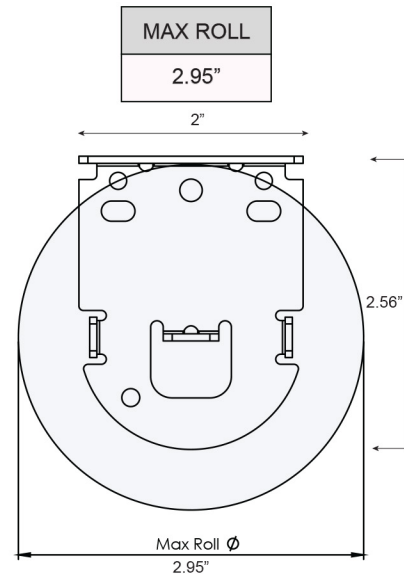


Parameters
 Fabric Weight (oz/sq yd): 13.30
 Fabric Thickness (in): 0.02
 Hembar Weight (oz/ft): 2.75

CONTROL	BRACKET	TUBE
1.1 Nm Motor	RT28/VX Bracket	45mm
1.1 Nm Motor	RT28/VX Bracket	49mm
1.1 Nm Motor	RT28/VX Bracket	45/49mm VX Coupler
2.0 Nm Motor	RT28/VX Bracket	45mm
2.0 Nm Motor	RT28/VX Bracket	49mm
2.0 Nm Motor	RT28/VX Bracket	45/49mm VX Coupler
3.0 Nm Motor	RT28/VX Bracket	45mm
3.0 Nm Motor	RT28/VX Bracket	49mm
3.0 Nm Motor	RT28/VX Bracket	45/49mm VX Coupler
4.0 Nm Motor	RT28/VX Bracket	45/49mm VX Coupler
6.0 Nm Motor	RT28/VX Bracket	45/49mm VX Coupler

Outside Specifications
 *For optimal performance shades need to maintain 4:1 ratio of length to width.
 Shades can be outside this ratio however shade performance could be impacted
 **Exceeding these values may cause fabric tracking issues
 ***coupled shades are available for larger widths

MAX ROLL



MAX DROP	
45mm	49mm
10'	

45mm Tube
 OD: 1.73"

49mm Tube
 OD: 1.93"

